

TAXIDERMIC LABORATORY

by
Amber Veel

the
CABINET

of
WORK X.
DRAWING
ENTROPY

The CABINET OF CURIOSITIES is a collection of specimens and objects to reflect the particular curiosities of their curators, whose categorical boundaries are yet to be defined.

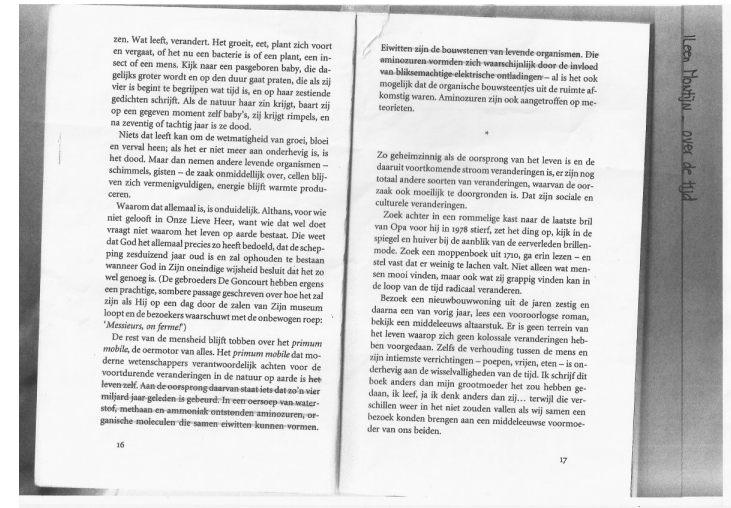
This edition of THE CABINET OF CURIOSITIES
was generated on February 16, 2016



1. SMELL OF LIFE

Source: Clipping from Alkmaarse Courant, 24 October, 2014.

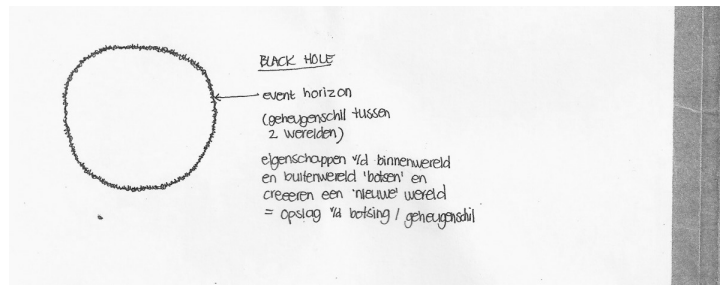
“Comet smelling like eggs and horse urine” A combination of rotting eggs, horse urine, formaldehyde, bitter almonds, alcohol, vinegar and a pinch of ether. These is, according to a group of Swiss scientists, the aroma one could smell if approaching the comet 67P/Churyumov-Gerasimenko.



2. PROTEINS AS THE SOURCE OF LIFE

Source: Copy from book: 'Over de tijd' by Ileen Montijn.

Proteins are the building blocks of living organisms.



5. EVENT HORIZON

Source: *Event Horizon.* (n.d.) In Wikipedia. Retrieved January 20, 2016.

In general relativity, an event horizon is a boundary in spacetime beyond which events cannot affect an outside observer.

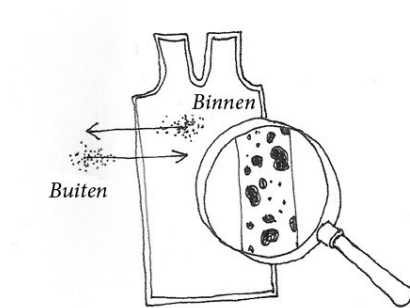
The event horizon as a skin between life and death.

Schuim op de golven
 als ons lichaam; vanuit het niets ontstaan als gevolg van
 toevallige gebeurtenissen
 resultaat: fragiel 'lichaam' drijvend op de golven om daar
 ooit weer in te worden opgenomen.

7. FOAM ON WAVES

Source: *Contemplation sketch by Amber Veel.*

As foam on waves; our body evolved out of the movement of matter; as series of coincidental events. The result is a fragile 'body' floating on waves, to be dissolved back into them once again.



Binnen en buiten interacteren met elkaar en laten *residuen* achter in de huid.

9. SURFACE RESIDUE'S

Source: Sketch by Amber Veel.

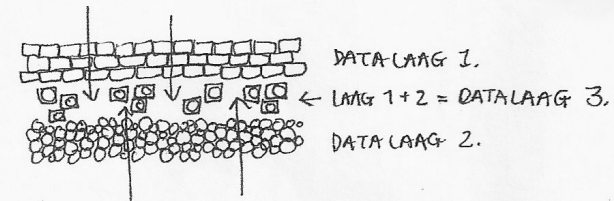
The inside and outside world interact with each other through the skin surface. Leaving residues of this interaction behind in the skin as readable traces.

INTERFERENTIE RASTER
(RASTER OVER RASTER)

RASTER 1/2 STOF (WEEFSEL)
+
RASTER 1/4 BEELDSCHERM (PIXEL)
=
BEWEGEND WOLKENPATROON

DATA LAAG 1. + DATA LAAG 2. = NIEUWE DATA (LAAG) 3.

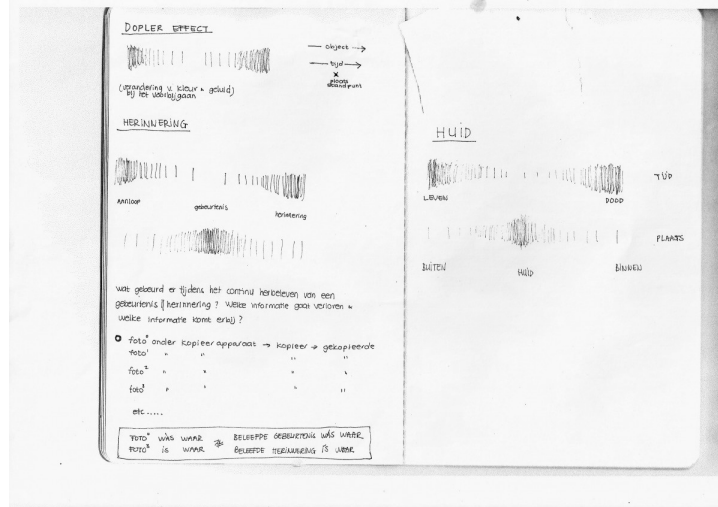
HUID:



11. MOIRÉ EFFECT

Source: Moiré Pattern (n.d.) In Wikipedia. Retrieved January 20, 2016.

In mathematics, physics, and art, a moiré pattern is a secondary and visually evident superimposed pattern created, for example, when two identical (usually transparent) patterns on a surface (such as closely spaced straight lines drawn radiating from a point or taking the form of a grid) are overlaid while displaced or rotated a small amount from one another.



21. DOPPLER EFFECT OF MEMORY

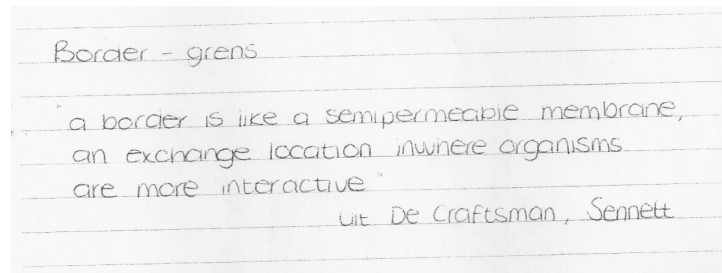
Source: *Contemplation sketch by Amber Veel, 2013.*

Stating that memory is a wave phenomena (the perceiver and the perceived are moving away from each other), how could I picture the Doppler effect of memory?



24. TRANSPARENT SKIN

Source: *Photo of a tag by Laser 3.14 (Borgerstraat, Amsterdam, 2011)*



25. BORDER AS AN EXCHANGE LOCATION

Source: *Written quote from book: 'The craftsman', by R. Sennett.*

I look at the skin as a (bodily)border. What kind of exchange is taking place through the skin border? And which organisms will be more interactive around the skin?



27. HYPERDERMIE

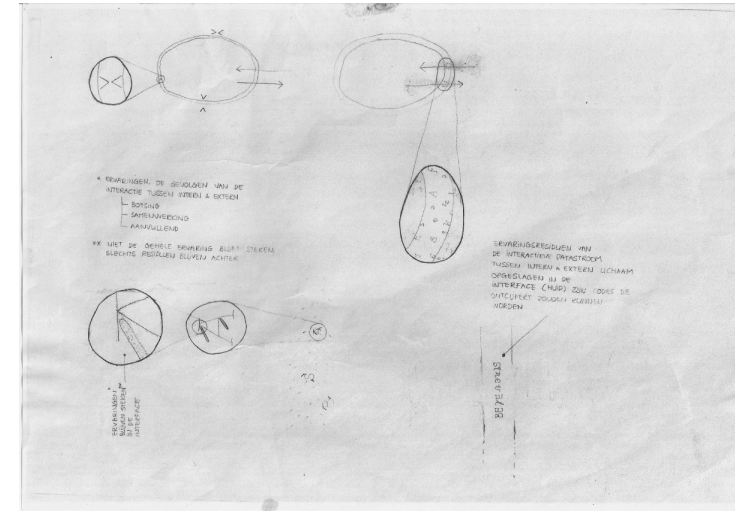
Source: *Writing by Amber Veel.*

Transcending skin.



36. WRINKLED PAPER SKIN

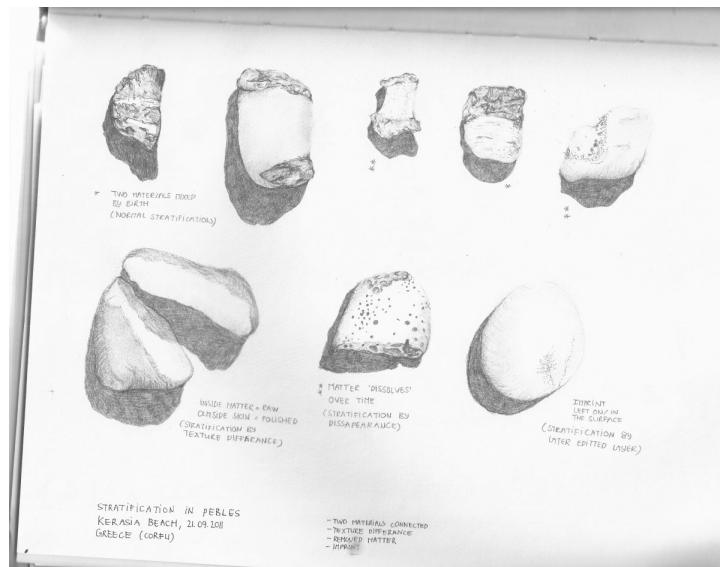
Source: *Wrinkled picture.*



43. SKIN COLLECTING DATA

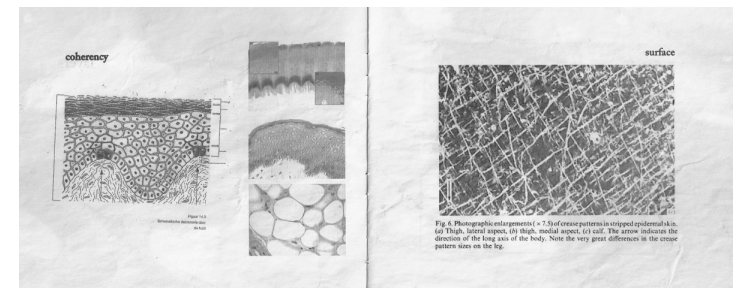
Source: *Sketch by Amber Veel.*

When the inside and outside world interact with each other through the skin barrier, they leave traces of this interaction inside the skin.



51. STRATIFICATION OF PEBBLES

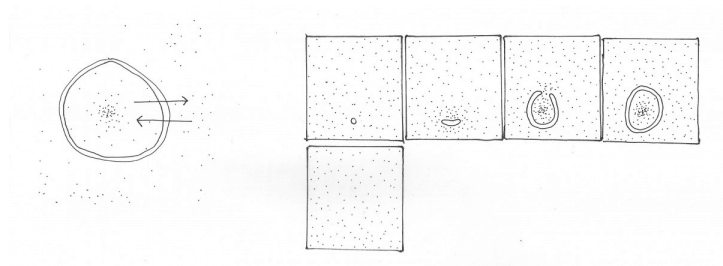
Source: Sketch by Amber Veel.



54. COHERANCY AND SURFACE OF SKIN

Source: Collage made by Amber Veel.

Study about skin as a material.



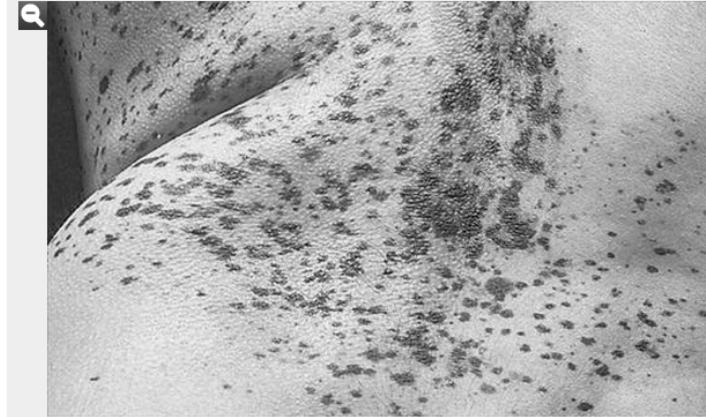
55. GROWING SKIN

Source: *Sketch by Amber Veel.*

From a single cell a small surface grows. The surface bends and creates a 3D, hollow sphere: the body. When the skin ultimately forms this hollow body, it simultaneously creates an inside and outside world. Skin is as the inbetween.

Figure 3.

Patient 1. Close-up view of the speckled-lentiginous nevus. Note the advanced scoliosis. Sweat drops due to hyperhidrosis are visible in the left lumbar region.

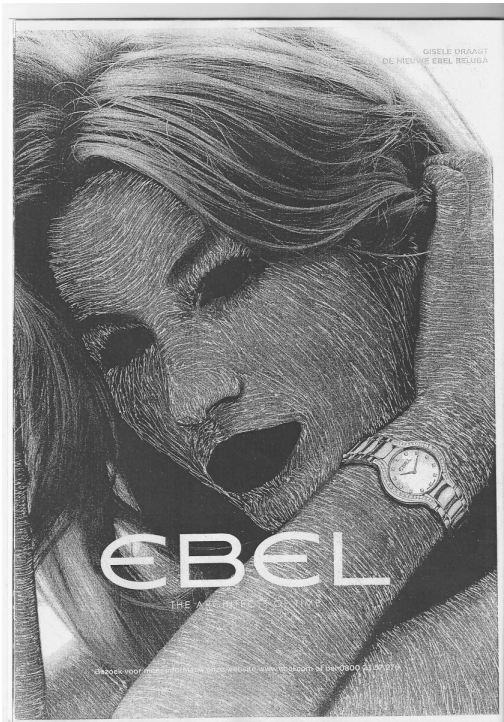


56. MEDICAL HYPERPIGMENTATION - SPECKLED LENTIGINOUS NERVUS

Source:

<http://www.pathologyoutlines.com/topic/skintumormelanocyticphacomatosispigmento.html>

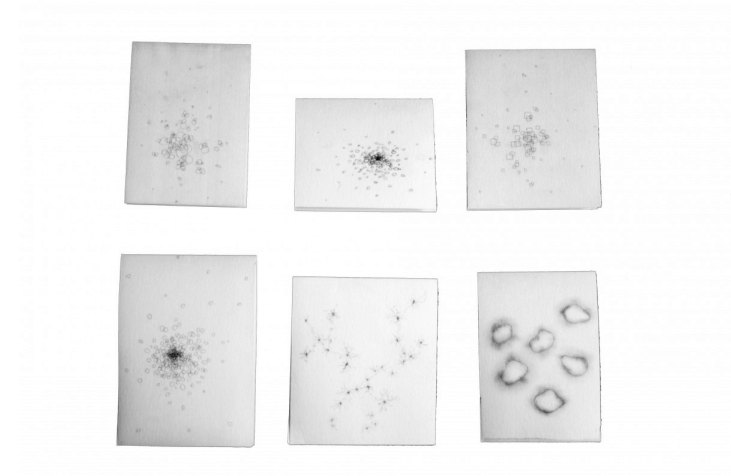
A patch of hyperpigmentation that can be seen on any area of the body



67. SCRATCHED SKIN SURFACE

Source: *Scarification (n.d.) In Wikipedia. Retrieved January 20, 2016.*

Inscribed skin highlights an issue that has been central to anthropology since its inception: the question of boundaries between the individual and society, between societies, and between representation and experiences.



85. CELL GROWTH

Source: *Series of drawings by Amber Veel.*
