

**TAXIDERMIC  
LABORATORY**

*by*

**Amber Veel**

*the*

**CABINET**

*of*

**WORK XIII.**

**MOLE**

---

The **CABINET OF CURIOSITIES** is a collection of specimens and objects to reflect the particular curiosities of their curators, whose categorical boundaries are yet to be defined.

---

---

This edition of **THE CABINET OF CURIOSITIES** was generated on May 25, 2016

---



schildpadden  
worden begraven  
geboren

---

8.

## TURTLE'S ARE BORN BURRIED

Source: *Sketch by Amber Veel.*

The mother turtle lays her eggs in a hole in the sand. After she lays the eggs she closes the hole with sand; she buries them. When the baby turtles break out of their eggs, they have to dig themselves out of their 'grave'.

---



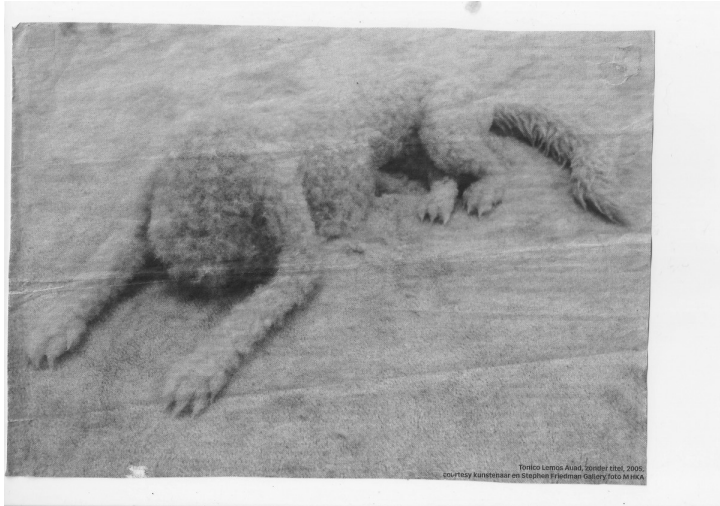
---

15.

## CUDDELY ANIMAL

Source: *Clipping from Metro newspaper.*

---



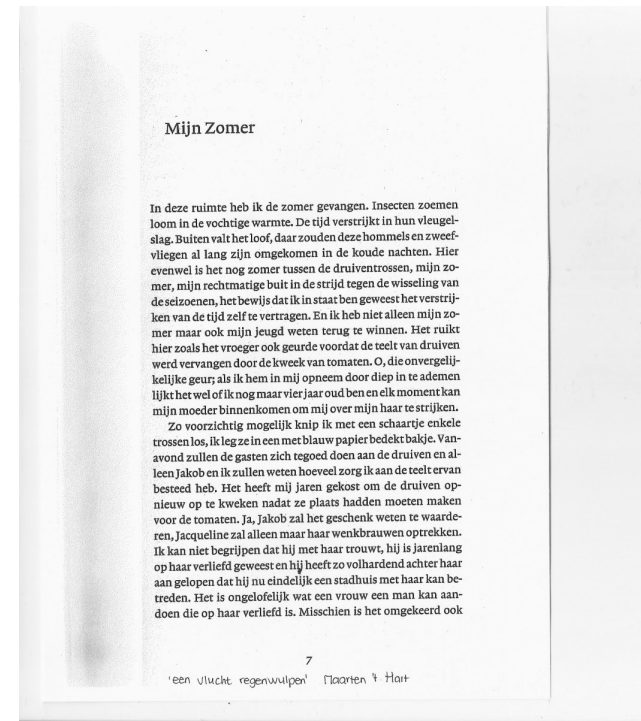
---

## 16. CUDDELY ANIMAL II

*Source: Newspaper clipping. Artpiece of Toico Lemos Auad (no title, 2005) at MHKA.*

**Cuddly animal grown out of surface fibers**

---



---

## 18. SLOWING DOWN TIME

*Source: Source: Copy from: 'Een vlucht regenwulpen' by Maarten 't Hart, Page 7.*

**Here, however, it is still summer between the bunches of grapes, my summer, my rightful booty in the fight against the changing of the seasons, the evidence I have been able to slow the passage of time itself.**

---



---

**31.  
CARRYING A (PET)  
ANIMAL ON YOUR  
SHOULDER**

Source: *unkown*

---



---

**32.  
EATING AND FEEDING  
- ANIMAL  
RELATIONSHIP**

Source: Screenshot from documentary: *'Human Planet: Jungles – People of the Trees'*.

**"What you take from the jungle, you have to give back."**

---

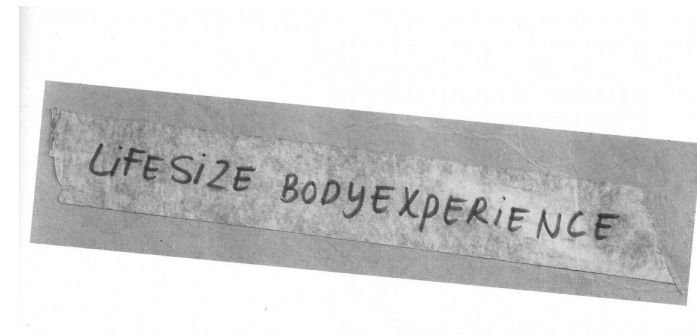


---

**81.**  
**LABELING A DEAD  
BIRD - COLLECTION**

*Source: Screenshot from artist documentary: 'Spring & Arnaud - kunst, liefde, sterfelijkheid' broadcast by AVRO Close up NPO.*

---

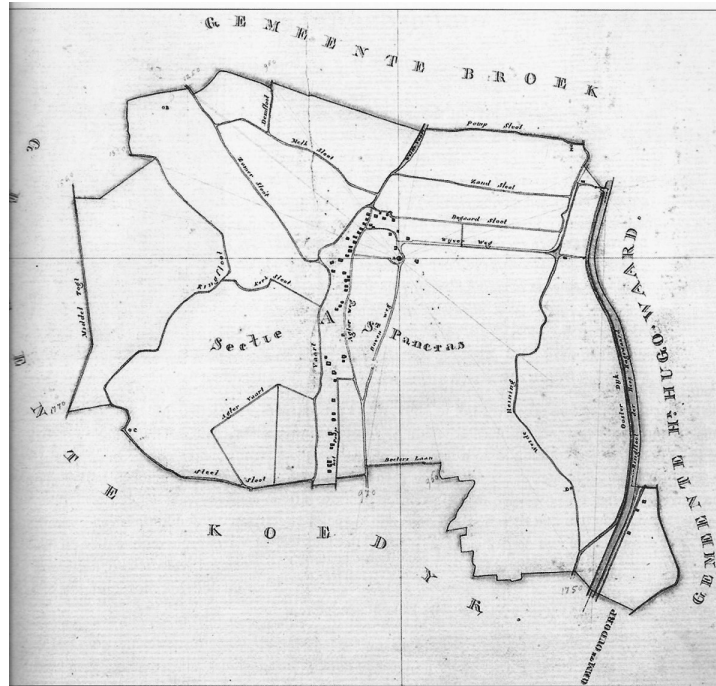


---

**82.**  
**LIFE SIZE BODY  
EXPERIENCE**

*Source: Writing by Amber Veel.*

---



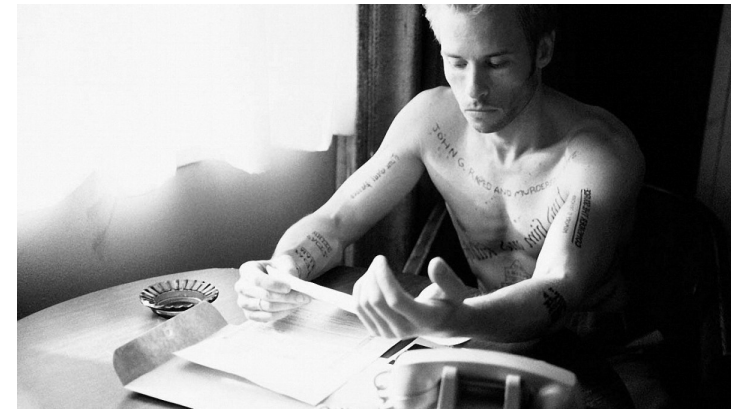
Afb. 8.15. De gemeente Sint Pancras in 1821.

---

## 83. MAP OF SINT PANCRAS

The map shows the lotting out of the wetland around the village to make it suitable for agriculture. This lotting out pattern is created by the working together of men and nature.

---



---

## 84. LIFE REMEMBERING SKIN

Source: Screenshot from film: 'Memento'. Director: Christopher Nolan, 2001 (NL)

A man creates a strange system to help him remember things; so he can hunt for the murderer of his wife without his short-term memory loss being an obstacle.

---